

ATP2A3 Antibody (N-Term)
Purified Rabbit Polyclonal Antibody (Pab)
Catalog # AP21708a**Specification**

ATP2A3 Antibody (N-Term) - Product Information

Application	WB, IHC-P,E
Primary Accession	Q93084
Reactivity	Human
Host	Rabbit
Clonality	polyclonal
Isotype	Rabbit IgG
Calculated MW	109256

ATP2A3 Antibody (N-Term) - Additional Information**Gene ID** 489**Other Names**

Sarcoplasmic/endoplasmic reticulum calcium ATPase 3, SERCA3, SR Ca(2+)-ATPase 3, Calcium pump 3, ATP2A3

Target/Specificity

This ATP2A3 antibody is generated from a rabbit immunized with a KLH conjugated synthetic peptide between 13-47 amino acids from human ATP2A3.

Dilution

WB~~1:2000

IHC-P~~1:25

E~~Use at an assay dependent concentration.

Format

Purified polyclonal antibody supplied in PBS with 0.09% (W/V) sodium azide. This antibody is purified through a protein A column, followed by peptide affinity purification.

Storage

Maintain refrigerated at 2-8°C for up to 2 weeks. For long term storage store at -20°C in small aliquots to prevent freeze-thaw cycles.

Precautions

ATP2A3 Antibody (N-Term) is for research use only and not for use in diagnostic or therapeutic procedures.

ATP2A3 Antibody (N-Term) - Protein Information**Name** ATP2A3 ([HGNC:813](#))**Function** This magnesium-dependent enzyme catalyzes the hydrolysis of ATP coupled with the

transport of calcium. Transports calcium ions from the cytosol into the sarcoplasmic/endoplasmic reticulum lumen. Contributes to calcium sequestration involved in muscular excitation/contraction.

Cellular Location

Nucleus membrane; Multi-pass membrane protein. Endoplasmic reticulum membrane; Multi-pass membrane protein. Sarcoplasmic reticulum membrane; Multi-pass membrane protein

Tissue Location

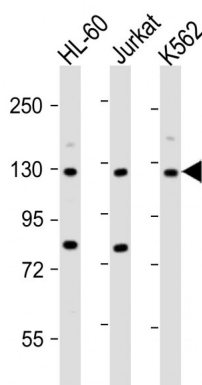
Found in most tissues. Most abundant in thymus, trachea, salivary gland, spleen, bone marrow, lymph node, peripheral leukocytes, pancreas and colon. Also detected in fetal tissues Expressed in cell lineages of hematopoietic, epithelial, or embryonic origin and also expressed in several cancer cell lines

ATP2A3 Antibody (N-Term) - Protocols

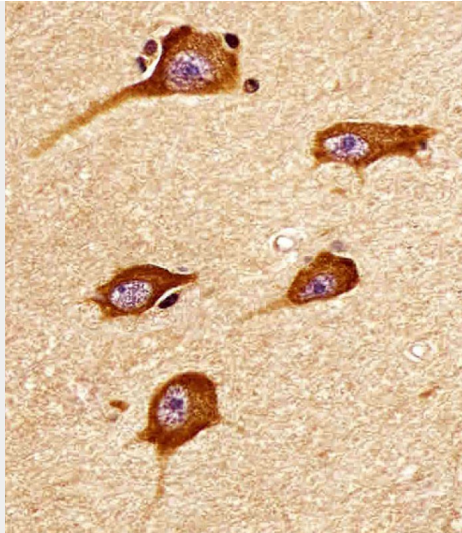
Provided below are standard protocols that you may find useful for product applications.

- [Western Blot](#)
- [Blocking Peptides](#)
- [Dot Blot](#)
- [Immunohistochemistry](#)
- [Immunofluorescence](#)
- [Immunoprecipitation](#)
- [Flow Cytometry](#)
- [Cell Culture](#)

ATP2A3 Antibody (N-Term) - Images



All lanes : Anti-ATP2A3 Antibody (N-Term) at 1:2000 dilution Lane 1: HL-60 whole cell lysate Lane 2: Jurkat whole cell lysate Lane 3: K562 whole cell lysate Lysates/proteins at 20 µg per lane. Secondary Goat Anti-Rabbit IgG, (H+L), Peroxidase conjugated at 1/10000 dilution. Predicted band size : 114 kDa Blocking/Dilution buffer: 5% NFDM/TBST.



AP21708a staining ATP2A3 in human brain tissue sections by Immunohistochemistry (IHC-P - paraformaldehyde-fixed, paraffin-embedded sections). Tissue was fixed with formaldehyde and blocked with 3% BSA for 0.5 hour at room temperature; antigen retrieval was by heat mediation with a citrate buffer (pH6). Samples were incubated with primary antibody (1/25) for 1 hour at 37°C. A undiluted biotinylated goat polyvalent antibody was used as the secondary antibody.

ATP2A3 Antibody (N-Term) - Background

This magnesium-dependent enzyme catalyzes the hydrolysis of ATP coupled with the transport of calcium. Transports calcium ions from the cytosol into the sarcoplasmic/endoplasmic reticulum lumen. Contributes to calcium sequestration involved in muscular excitation/contraction.

ATP2A3 Antibody (N-Term) - References

Dode L., et al. *Biochem. J.* 318:689-699(1996).
Dode L., et al. *Biochem. J.* 319:1008-1008(1996).
Dode L., et al. *J. Biol. Chem.* 273:13982-13994(1998).
Poch E., et al. *Am. J. Physiol.* 275:C1449-C1458(1998).
Zody M.C., et al. *Nature* 440:1045-1049(2006).